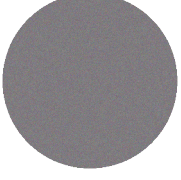
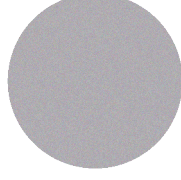


REFLECTIVE (REFLEKTÖR)

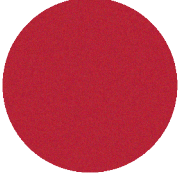


Y101
Gray

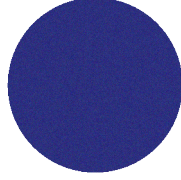


Y001
Silver

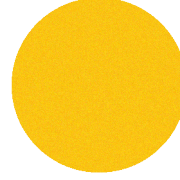
COLORED REFLECTIVE (RENKLİ REFLEKTÖR)



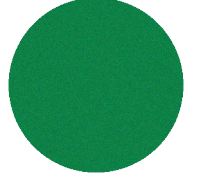
HT-201A
Red



HT-202A
Royal Blue



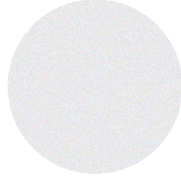
HT-203A
Yellow



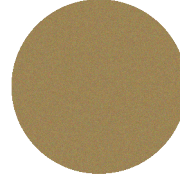
HT-204A
Green



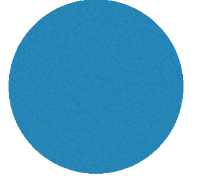
HT-205A
Black



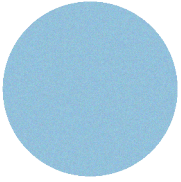
HT-206A
White



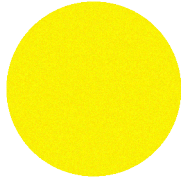
HT-207A
Gold



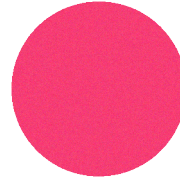
HT-208A
Cobalt Blue



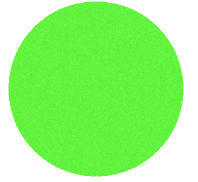
HT-209A
Sky Blue



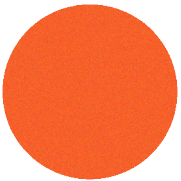
HT-210A
Fluo Yellow



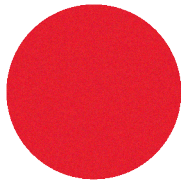
HT-211A
Fluo Pink



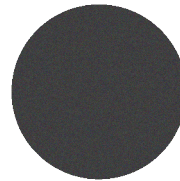
HT-212A
Fluo Green



HT-213A
Fluo Orange



HT-214A
Fluo Red



HT-215A
Dk.Grey

REFLECTIVE (REFLEKTÖR) – COLORED REFLECTIVE (RENKLİ REFLEKTÖR)

ÜRÜN TANIMI

Plotter ile kesim uygulamaları için Reflektif Film malzeme

ÖZELLİKLER

Renkli Reflektör: **Reflektör:**
Ebat: 50 cm x 50 m **Ebat:** 50 cm x 50 m
Net kilo: 11 kg / rol **Net kilo:** 9,6 kg / rol

BASIM TALİMATLARI

Aşağıdaki talimatlar sadece normal şartlara göredir.

Derece: 150°C (302°F)

Baskı süresi: 15 saniye

KULLANIM TALİMATLARI

- 1) Film üzerinde lazer makinası ile ürünü tersten kesiniz.
- 2) Fazlalıkları çıkarınız.
- 3) Ürünü tişörtün üzerine koyunuz.
- 4) Orta basınçta 15 saniye presleyiniz.
- 5) Soğuk / ılıkken polyester taşıyıcı filmi çekiniz.

UYGUN KUMAŞLAR

Pamuk, polyester / pamuk karışımı, polyester / akrilik vb tekstiller için uygundur.

Boyanmış ve işlem görmüş kumaşlar için uygun değildir.

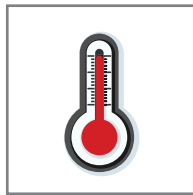
UYARI

Bu belgedeki bilgiler bizim tecrübelerimize dayanarak verilmiştir.

Size standart üretiminden önce ürünümüzü test etmenizi öneririz.



Deseni tersten kesiniz



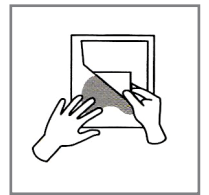
150°C (302°F)



Orta basınç



15 saniye presleme



Ilık/Soğuk çekim