

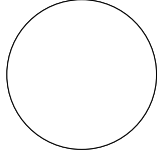
# PU FLEX SOFT SHELL (160 MICRON)

# TRUTAPE

Digital  
Catalog

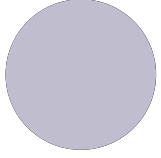


Dijital  
Katalog



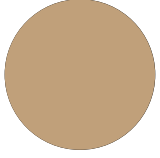
SS100

White



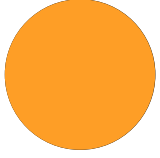
SSM150

Sliver



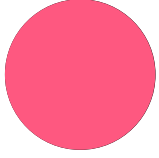
SSM410

Gold



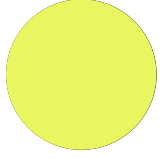
SSF370

Orange Fluo



SSF390

Pink Fluo



SSF450

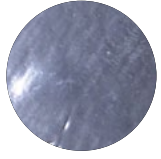
Yellow Fluo

# PU FLEX MIRROR (90 MICRON)

Digital  
Catalog

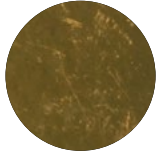


Dijital  
Katalog



MR150

Silver



MR410

Gold



**Deseni Tersten Kesiniz**  
Cut The Image in Reverse



**PU FLEX SOFT SHELL**  
140°C (284°F)  
**PU FLEX MIRROR**  
150°C (302°F)



**4 Bar Basınç**  
4 Bar Pressure



**PU FLEX SOFT SHELL**  
8 Saniye Presleme  
8 Seconds For Pressig  
**PU FLEX MIRROR**  
12 Saniye Presleme  
12 Seconds For Pressig



**Ilık Çekim**  
Warm Peel



**Lazer ve Plotter Kesim**  
Laser And Plotter Cutting



**Uygulamadan 24 Saat Sonra**  
After 24h Width Application



**PU FLEX SOFT SHELL**  
Ebat / Size : 50cmx25m  
Ağırlık / Weight : 5kg/roll  
**PU FLEX MIRROR**  
Ebat / Size : 50cmx25m  
Ağırlık / Weight : 4kg/roll

**UYARI** Boyalı kumaşlarda migrasyon ihtimaline karşı üretim öncesi gerekli testlerin yapılmasını öneririz. Kullanılacak kumaşın içeriğine göre, basım talimatları değişebilir.

**NOTICE** We offer you to test the product against the color migration. Pressing instruction may change, according to the fabric type.